



CIS-1001

Steering Wheel Kit

Parts List, this kit:

Resin Steering Column
Resin steering wheel rims
Photoetched steering wheel spokes
Resin hub/horn button
1 Piece 800 -grit sandpaper

You will also need:

Hobby Knife with NEW #11 blade
Fine-grit sanding stick
Krystal Klear
Precise tweezers.

Notice: Please keep in mind that this kit will require patience and a delicate approach to parts preparation. Satisfactory results can be obtained only if you follow these directions carefully and practice plenty of patience.

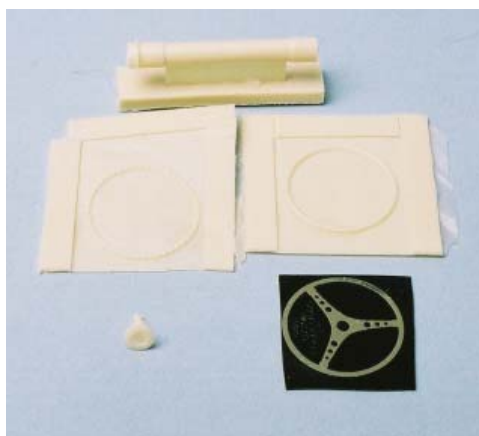


Fig. 1

Fig. 1 - Your kit comes with resin-cast front and back rims to apply to the photo etched steering wheel spoke and rim, as well as a resin-cast steering column and a resin-cast horn button. You will need to remove the front and back steering wheel rims from the resin casting flashing and locate the steering wheel to the steering column with the horn button. Please handle the parts very carefully.

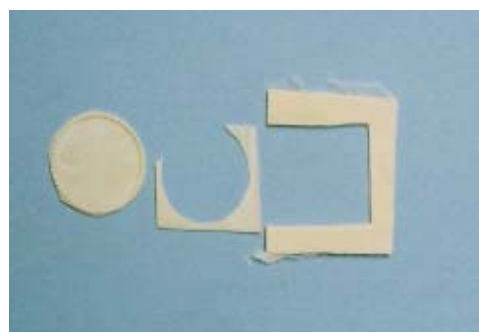


Fig. 2

Fig. 2 - The first step is to carefully remove the steering wheel rims from the flashing. Use a new #11 blade, and cut around the *outside* of each of the rims until you release the rim from the flashing. Make a series of very light, careful cuts and be patient. Don't cut out the inside flashing at this point since you'll need the strength imparted by the flashing for the next step. Repeat this for the other steering wheel rim, also.



Fig. 3

Fig. 3 - Gently grasp the rim and "roll" the outside of the rim on a piece of 800 grit sandpaper (provided). Don't "scrub" the wheel back and forth, but roll the rim in a circular pattern - parallel to the radius rather than at an angle on the paper. It is essential that you need to proceed here with great care and patience: *the resin rims are very delicate*. Repeat this for the other steering wheel rim, also.

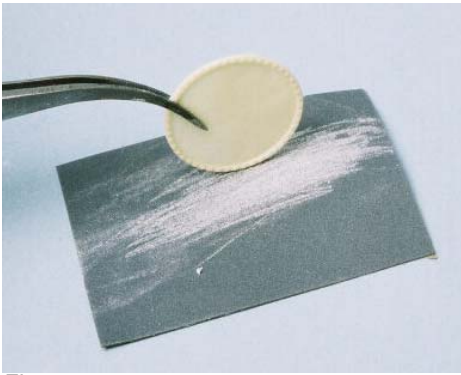


Fig. 4

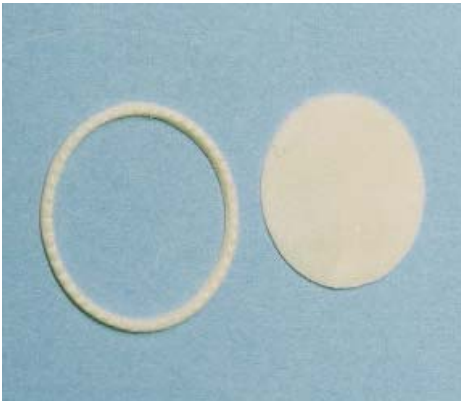


Fig. 5



Fig. 6



Fig. 7



Fig. 8

Fig. 4 - As an alternative, it might be helpful to grasp the part with some very delicate tweezers. The goal here is to clean up the flashing from the outside of the rim. Repeat for the other steering wheel rim. Be patient and work carefully!

Fig. 5 - Be very careful and remove the flashing from the inside of the steering wheel rim with your hobby knife. Again, be exceptionally careful with the #11 blade. Proceed with great care and patience to trim the flashing because, though possible, it is risky to roll sandpaper around the inside of the rim. If you need to do so, roll the piece of 800-grit paper into a roll and GENTLY roll the sandpaper around the inside of the rim. As with other steps, the key here is to be careful and exercise *considerable patience*.

Fig. 6 - Gently peel the rubberized-backing from the photo etched steering wheel spokes (the photo etched piece will bend if you're not careful). If you've been patient, you should have these parts at this point.

At this point, you'll need to remove the steering wheel center from the resin sprue. Again, lightly scribe the interface between the column and the sprue to prevent nicking the radius of the steering column: clean up the mating surface with a fine-grit sanding stick. Fig. 7 - Now, drill out the center of the steering wheel column to accept the resin "stub" on the back side of the horn button. Don't drill too deeply. Test fit the horn button-to-steering column interface. The horn button will locate the assembled steering wheel to the steering column.

Fig. 8 - You'll also need to drill out the steering column to accept a turn signal stalk. If your model features a column shift (automatic manual), drill a hole for the shifter too. You should use lengths of steel or brass rod for the turn signal and the shifter.

Soak the resin parts in a suitable white wall tire cleaner such as Westley's Bleach White or DuPont's PrepSol (use protective gloves when using the PrepSol), and then apply your desired paint to the various resin parts. Attach the steering wheel rims to the photo etched part using very tiny "buttons" of epoxy glue or, preferably, Krystal Kleer. Install the steering wheel assembly to the steering column by the horn button.

Good luck with this kit! And thanks for using products from Custom Styling Studio.